

## 6 Stained Glass Interactive

If you face eastwards, you will see a Victorian stained glass window showing Jesus' crucifixion. Now have a stroll back towards the west end of St. Mary's and please do *have a go at our 'Stained Glass Interactive'*. You can get really creative with this and build your own stories in it!

### ST. MICHAEL'S, WHITWELL

## 7 Chancel and Ascension Window

Now walk up the steps and follow the arrow through the passageway that leads from St. Mary's into St. Michael's. You will now find yourself in the chancel of St. Michael's, the second of our three churches. Until 1935 these two buildings were separate, but now they are connected - as you can see!



Here you will find a very special and peaceful place, dedicated to the memory of those who saw service or lost their lives in the First World War (1914-1918).

*Find the east window (1919) which shows the Ascension – when Jesus was lifted to Heaven following His resurrection.*

FOUND

*Who are the people watching Jesus as He is lifted to Heaven?*

### ALL SAINTS, HACKFORD

## 8 Ruined Porch Fragment

Reepham's third church, All Saints, is a little harder to find as there is hardly any of it left! *Go into the churchyard and try to find this fragment of wall, which was part of the porch leading into All Saints.* You may need all of your Heritage Detective skills to find this!



FOUND

Most of All Saints burnt down during the Great Fire of Reepham in 1543! However, its tower was left standing until that too was demolished in 1796. Stand next to the fragment of wall and use the artist's impression below to help you imagine what All Saints may have once looked like.



*The tower has been left only half built in the picture so that you can carefully restore and complete it!*

You will find further information here about All Saints on the nearby Interpretation Board.

## 9 Town Sign

An ancient myth associated with Reepham says that three local sisters were responsible for the building of a church each!

*As you leave the churchyard and head towards the market place, you might see these sisters on Reepham's lovely town sign.*

FOUND

This sign was designed by pupils from Reepham High school and installed in 1992. It shows everything in groups of three! *Have a close look and write down what are grouped into threes:*



## 10 Why?

*Did you manage to have a think about WHY Reepham has three churches in one churchyard? If you did, then write your answer down here (and don't worry, no-one really knows for sure!)*

We really hope that you have enjoyed this Heritage Detective's Trail around Reepham's three churches. Remember to check out the website [www.reephambenefice.org.uk](http://www.reephambenefice.org.uk)

The Trail was written by Saul Penfold and the pupils of Reepham Primary School – thank you. The illustrations are by Mike McEwen.



Reepham Parochial Church Council gratefully acknowledges financial support from the Heritage Lottery Fund.

# Reepham's Three Churches in One Churchyard

## HERITAGE DETECTIVE TRAIL

Reepham is amazing! Most places have one church in one churchyard. Sometimes they might even have two, but Reepham actually once had THREE! There is only one other place in the whole of Europe that ever had three churches in one churchyard.



The lost church of All Saints, Hackford

St. Michael's, Whitwell

St. Mary's, Reepham

Two of Reepham's three churches, St. Mary's and St. Michael's, are still used for regular worship and for a wide range of community activities. They have been here since before 1300!

The third church, All Saints, was mostly destroyed in the 'Great Fire of Reepham' in 1543 and was later demolished. Only a tiny bit of All Saints is left today!

**Yet no one knows for sure WHY Reepham ever had three churches in the same churchyard.**

**Perhaps you can answer this as you uncover the secrets of these three amazing buildings.....**



This Heritage Detective's Trail has been designed to be enjoyed by people of all ages. It will take you on a tour of Reepham's three churches, asking you to use your detective skills of observation, critical thinking, note taking and sketching as you go. We hope you enjoy it!

### St. Mary's Enlarged Plan



This numbered plan of Reepham's three churches will take you to places where you can use your super Heritage Detective skills!

However, before you begin your trail, take a couple of minutes to sit or stand quietly in this ancient space and to gather your thoughts.

Maybe have a think about why the churches are here and about the many thousands of people who have used them before you in the past. Remember that you are always welcome to stop, pray and to light a candle during your time here in Reepham's three churches.

## ST. MARY'S, REEPHAM

### 1 The Font

This ancient stone font stands at the west end of St. Mary's. This is the only font that remains from the three churches. It is used for Baptisms, a service of celebration when people decide to follow Jesus.



FOUND

### 2 Pew End Carvings

Move a short distance to the centre aisle of St. Mary's and look carefully to find these strange medieval carvings in the ends of the pews.

Tick the boxes when you have found them: They are certainly unusual looking animals – what do you think they are?



FOUND



FOUND



FOUND



FOUND

### 3 Floor Tiles

Continue along the central aisle until you reach an area called the chancel. The floor tiles here show symbols of Jesus' Crucifixion.

See if you can find the tiles showing the dice that the Roman soldiers used to gamble for Jesus' clothes.

How many of these 'dice tiles' can you find?

FOUND

.....

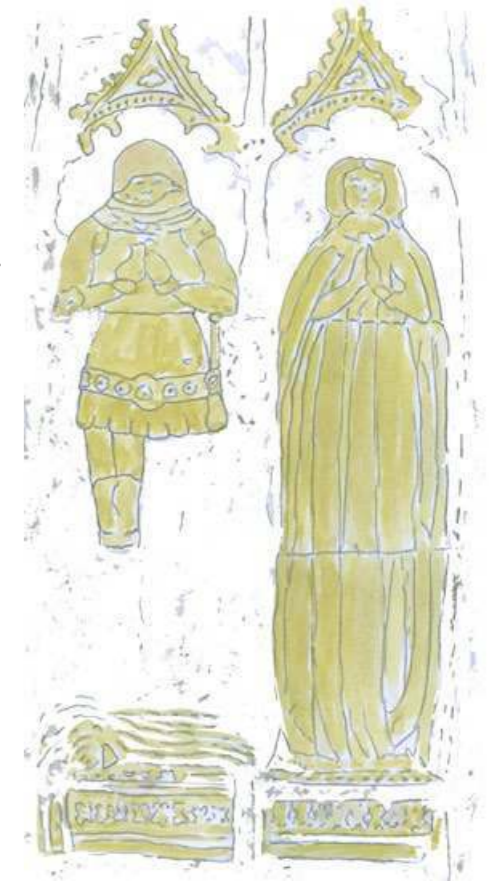


### 4 Brasses

In the middle of the chancel floor you will see these wonderful brasses, showing the burial place of Sir William de Kerdiston (who died in 1391) and also of his wife. The brasses have suffered a bit over time and Sir William is missing one and one half of his legs!

He's bound to appreciate you restoring his legs on the picture above, so see if you can carefully draw them back in!

See if you can also draw in the creature that Sir William would have been standing on. You can just about make out the creature's claws.



### 5 Tomb of Sir Roger de Kerdiston



On the north wall of what is called the sanctuary, you will find an amazing piece of medieval sculpture. This is the tomb of Sir Roger de Kerdiston (died 1337) and is one of the real treasures of this church. Sir Roger lies in full armour on a bed of cobbles (is he on the beach?) with a rather jolly looking lion, or maybe it's a dog, at his feet.

Why do you think Sir Roger is lying on a bed of cobbles (your guess is as good as ours!) What might the lion at his feet indicate about Sir Roger's personality and character?



Have a look towards the bottom of the monument and you will see ten small figures, known as weepers. Why do you think these figures are called 'weepers'?

FOUND

.....

.....

.....

.....